



RECP #: 752662

RECORDED 5/8/2019 AT 1:11 PM BK# 2620 PG# 1704  
Debra K. Lee, CLERK OF LARAMIE COUNTY, WY PAGE 1 OF 1

# STATE OF WYOMING CORNER RECORD

(In compliance with the CORNER PERPETUATION AND FILING ACT, Wyoming Statutes, 1997 Section 33-29-140, et. seq., and the Rules and Regulations of the Board of Registrations for Professional Engineers and Professional Land Surveyors)

## NORTHEAST CORNER SECTION 3, T. 17 N., R. 63 W., 6TH P.M., LARAMIE COUNTY, WYOMING

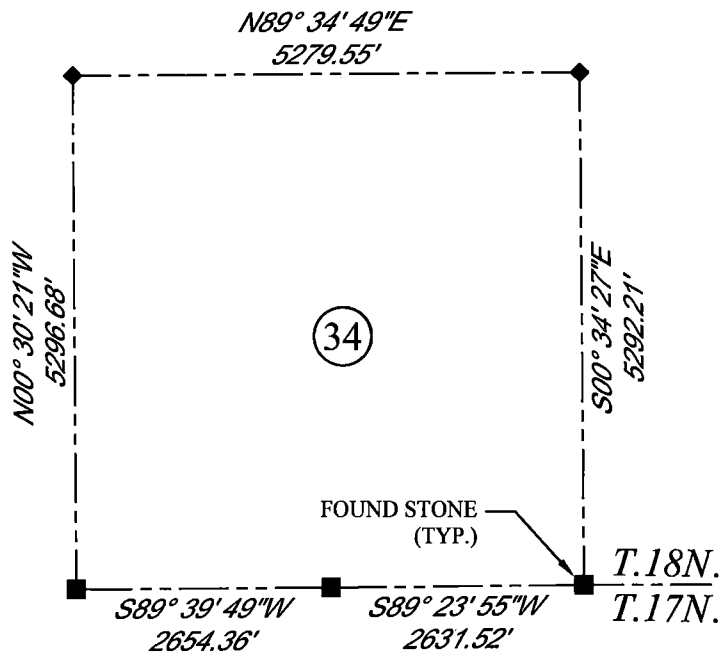
**GLO:** SET A SANDSTONE 18X10X4, 12 IN. DEEP WITH 4 MARKS ON THE WEST AND 2 ON THE EAST FACE FOR CORNER TO SECTIONS 2, 3, 34, AND 35.

**FOUND:** FOUND SANDSTONE ON SIDE NOT SET, APPROXIMATELY. 19X14X5 WITH 4 NOTCHES CLEARLY VISIBLE ON (1) FACE AND 2 APPARENT NOTCHES ON ANOTHER FACE.



SCALE: 1" = 2000'  
NORTH DETERMINED BY  
G.P.S OBSERVATIONS

SET: 3.25" ALUMINUM CAP ON # 5  
REBAR, AT SURFACE, ON SOUTH  
SIDE OF FOUND STONE, STAMPED  
AS SHOWN



### LEGEND:

- FOUND BLM CAP
- FOUND USFS CAP
- FOUND STONE
- FOUND PRIVATE MONUMENT
- ◇ CALCULATED POSITION
- ▲ SET MONUMENT (LS10245)
- SECTION LINE

DATE OF FIELD WORK: 10/04/2018 OFFICE REFERENCE: MERIDEN

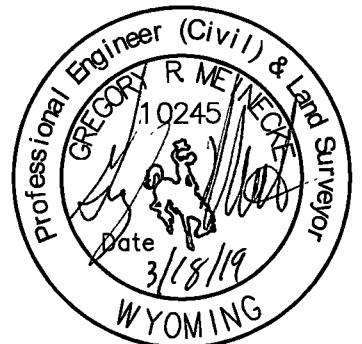
### CROSS INDEX DIAGRAM

	1	2	3	4	5	6	7	8	9	10	11	12	13	14	15	16	17	18	19	20	21	22	23	24	25	
A																										
B																										
C		6																								
D																										
E																										
F																										
G			7																							
H																										
J																										
K																										
L																										
M																										
N																										
O																										
P																										
Q																										
R																										
S																										
T																										
U																										
V																										
W																										
X																										
Y																										
Z																										
	1	2	3	4	5	6	7	8	9	10	11	12	13	14	15	16	17	18	19	20	21	22	23	24	25	

WOOD  
2615 AVIATION DRIVE  
SHERIDAN, WY 82801  
PH: 307-675-6400



THIS CORNER RECORD WAS  
PREPARED BY ME OR UNDER  
MY DIRECTION AND  
SUPERVISION,  
SEAL AND SIGNATURE



CORNER NAME: NORTHEAST SECTION: 3 T. 17 N., R. 63 W. ; 6TH P.M. CROSS-INDEX # A-17  
SBRPELS/PLSW: MARCH 1994; PLSW JANUARY 1998